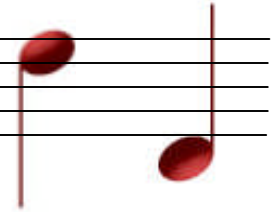


Quarter Notes



THE WHITBY BRASS BAND NEWSLETTER

Volume 1, Issue 2

Christmas 2008



Christmas is a time of Frantic Banding!

Christmas is a busy time for everyone. There's shopping to do, dinners to cook, and parties to attend. There's gifts to wrap, cards to send, decorations to put up and toys to put together!

When you're in a band, you still have all of those things, plus parades, concerts and rehearsals.

Don't get me wrong. We are volunteers, and we do this because we want to!

We don't always enjoy it at the time - especially if it's raining, or we're marching behind the elephants again -

but we keep coming back year after year for the same frantic banding experience. I suppose for some, it's like running a marathon, it hurts like heck while your doing it, but in the end you feel a sense of accomplishment. For others it might be the sense of camaraderie, of suffering together in the trenches to emerge victorious at the end of the battle.

Whatever the reason or reasons, a band is made up of people who are willing to give up weekends to do parades, and show up for

weekly rehearsals even though it's only October and we are already practicing Christmas music.

When the running is done and we can finally say that the Christmas band season is over, I think we all feel some sense of relief.

"We did it again! "

"Another one under the belt!"

And of course the inevitable, "What's next?"

While the majority of the band will be nestled snugly over the Christmas break, Ian our librarian, will be getting music ready for the next

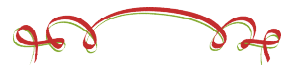
concert.

Come the new year, we will all return to rehearsal, eager to play something that's not Christmas music!

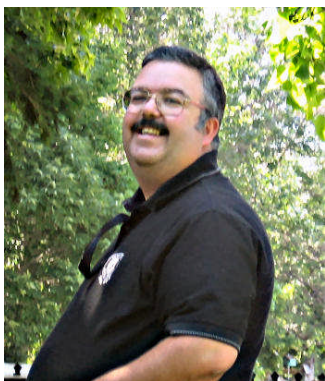
And so it will go until next fall, when the whole frantic season will start again, and we'll all grumble as we receive our folder of Christmas music.

Still, we must enjoy it, mustn't we?.

Somewhere, deep down, I think we do.



Meet Assistant and Junior Bandmaster Gerry Murphy



Gerry Murphy is a graduate of Queen's University with honors in Conducting, Music Education, Composition and Arranging. After several years performing with the

Canadian Forces Bands on Tuba and Euphonium, and teaching at public and private schools at the elementary level, Gerry now gives individual lessons in his home studio in Oshawa. In the past he has been the director of the Belleville Municipal Band and The Concert Brass in addition to performing with many orchestras and chamber ensembles. He currently holds the position of Principal Tuba and Assistant Conductor of the Whitby Brass Band in addition to the Junior Band directorship.

Gerry has composed and arranged many pieces of music for both the junior and senior bands, and also acts as our resident instrument technician.

You will regularly see Gerry performing Bass solos at concerts. His recent performances include Mein Bass, and Frosty the Snowman at our 2008 Christmas concert. A man with a great sense of humour and caring, Gerry has been a welcome addition to the band since joining in 1998.



Quarter Notes

An Interview with Mr. Alan Black - by Jacky Bramma



For more than forty years the band has not only enjoyed Alan's musical ability, but also his ready wit and his wealth of memories, which he is always willing to share.

Alan was born into a Salvation Army family in Lancashire, England, and began playing cornet under the watchful eye of his grandfather. During World War II he was sent to live in Southport, where he continued to play. As a young man he was selected (along with 48,000 others) to be a "Bevin boy", working as a miner instead of being con-

scripted into the forces for National Service. (Interestingly, many years later when he came to WBB, he discovered that another band member, Al Cooper, also served at the same mine.)

Alan played with Gorton Silver Band at that time. He and his wife, Barbara, came to Canada in 1957, and for the next 17 years he held a variety of sales jobs, before starting his own business as a coin dealer. A chance meeting with band member Alf Graham in an Oshawa restaurant in the early '60s brought him to the Whitby Brass Band. Alan played solo cornet, along with Mike Marsden, Alf Graham and Morley Smith. One of his most vivid memories is of the CNE competition in August 1966, when conductor Eric Clarke collapsed and died during the performance. Alan caught him as he fell. On a more humorous note, he recalls the

(then) oldest member of the band, Jack Cormack, a tenor horn player since 1912, sitting by the side of the road after a long and very hot parade in Cornwall. As he mopped his brow, he said in a trembling voice, "We don't have to walk back, do we?"

Alan also remembers with affection former bandmaster Stan Redfearn, noting his musical competence. In the mid 1960s Alan, along with Curt Brown and Morley Smith, set up the band's executive, and served on it in various capacities for many years. He also served as assistant bandmaster, and, in 1985, took over the Junior Band. His obvious love of youngsters, his patience, and his sense of humour, in addition to his musical knowledge, helped the group to grow in ability and numbers. How has the band changed over the years? In some ways, not a great deal. Alan appreciates the camarade-

rie and family-oriented nature of the band, which persist to this day, and which have always made it so much more than just a group of players. (His daughter, Diane, played Bb bass for a time, and Barbara has always been a staunch supporter of band activities.) He feels that the present day band is in good shape, with a healthy supply of up and coming players from the Junior Band, and a high standard of play. Alan continues to perform solos and duets, and willingly acts as a mentor to less experienced musicians in his section, living proof that brass banding is, indeed, a lifelong pursuit.



Quarter Notes Newsletter committee: Phil Crossley, Jacky Bramma, Allan Ash

Quarter Notes Sign up Form

Please fill in and return this form to a band member.

Comments:

Name

Email

Address - if no email

Sign up online at www.whitbybrassband.com

Upcoming Concerts

Solo Concert

Thursday Feb 26th 2009 7:30pm

Centennial Bldg.

Free Concert—ticket required

Festival of Brass

Saturday April 5th 2009

10am-10pm

St. Lawrence Centre Toronto

**Visit our website for details
and ticket pricing
www.whitbybrassband.com**